



ROSEFIELD

Spring - Summer 2025

This is Rosefield



Rosefield reimagines watches & jewelry for relaxed elegance and easy living. We make fashion-forward styles that blend the classic with the modern. Where function meets form. At a price that works for today's cosmopolitan consumer.

Who is she? The Rosefield Woman is the epitome of city living with her finger on the pulse of what's next, what's new, what's now. She's the quintessential cool girl that isn't afraid to try new things. The Rosefield Woman sets trends — never follows them — and knows what she wants in life. This is at the core of our design philosophy.

Rosefield draws inspiration from Dutch minimalist design while taking cues from global contemporary fashion aesthetics. Our collections incorporate elements of vintage beauty from classic pieces mixed with the creativity of the future.

It's about being timeless, not trendy.



Find product photos, lifestyle images and more, by scanning the QR code.

Simple details. Pure luxury.

Novelties Spring - Summer 2025	04
Watches	08
Gift Sets	24
Straps	26
Visual Merchandising	34
Instructions	38
Warranty & After Sales	41

Novelties

Spring - Summer 2025

Boxelle

- Case dimensions: 19.5 × 19.5 mm
- Case thickness: 7 mm
- Dial type: Matte (01 - 03) Sunray (04 - 05)
- Strap size: 12 mm
- Strap material: Stainless steel
- Availability: January

01.



BWGSB-B01 € 129

White Matte - Steel
- Gold

EAN: 8720791528720



02.



BWSSB-B02 € 129

White Matte - Steel
- Silver

EAN: 8720791528737



03.



BWDSB-B03 € 129

White Matte - Steel
- Duotone

EAN: 8720791528744



04.



BCGSB-B04 € 129

Champagne Sunray
- Steel - Gold

EAN: 8720791528751



05.



BEGSB-B05 € 129

Emerald Sunray - Steel
- Gold

EAN: 8720791528768



Studio Bangle

- Case dimensions: 23.5 × 19.5 mm
- Case thickness: 7.5 mm
- Dial type: Mother of Pearl
- Strap size: 58 mm (01), 62 mm (02)
- Strap material: Stainless steel
- Availability: March

01.

**STWGS-G-ST04 € 159**White MOP - Steel
- Gold

EAN: 8720791526825

STWGS-G-ST04



8 720791 526825

02.

**STWGS-G-ST05 € 159**White MOP - Steel
- Gold

EAN: 8720791526832

STWGS-G-ST05



8 720791 526832

Mini's

- Case dimensions: 15 × 18.5 mm (01, 02), 18 × 22 mm (03, 04),
∅ 20.4 mm (05, 06)
- Case thickness: 6.8 mm (01, 02), 6.5 mm (03 - 06)
- Dial type: Sunray etching (01, 02), Mother of Pearl (03, 04),
Sunray (05), Matte (06)
- Strap size: 8 mm
- Strap material: Stainless steel
- Availability: March

01.



MWGMG-M01 € 139

White Sunray - Mesh
- Gold

EAN: 8720791526849



02.



MWSMS-M04 € 139

White Sunray - Mesh
- Silver

EAN: 8720791526870



03.



MWGMG-M02 € 139

White MOP - Mesh
- Gold

EAN: 8720791526856



04.



MWSMS-M05 € 139

White MOP - Mesh
- Silver

EAN: 8720791526887



05.



MCGMG-M03 € 139

Champagne Sunray
- Mesh - Gold

EAN: 8720791526863



06.



MWSMG-M06 € 139

White Matte
- Mesh - Duotone

EAN: 8720791526894



Watches

Studio Edition 01

- Case dimensions: 18.5 × 15 mm
- Case thickness: 7.5 mm
- Dial type: Sunray etching (01 - 03) Mother of Pearl (04)

- Adjustable size: 15.5 cm (min.) 18.7 cm (max.)
- Strap material: Stainless steel

01.



SWGSG-O52 € 159

White Sunray - Steel
- Gold

EAN: 8720246512212



02.



SWSSS-O53 € 159

White Sunray - Steel
- Silver

EAN: 8720246512229



03.



SBGSG-O66 € 159

Black Sunray - Steel
- Gold

EAN: 8720246519532



04.



SWGSG-OV13 € 159

White MOP - Steel
- Gold

EAN: 8720246512236



Studio Edition 02

- Case dimensions: 19.5 × 24 mm
- Case thickness: 7.0 mm
- Dial type: Sunray etching
- Strap material: Stainless steel

- Strap size: 16 mm
- Adjustable wrist size: 13.8 cm (min.)
18.5 cm (max.)



SWGSG-O55 € 159

White Sunray - Steel
- Gold

EAN: 8720246516395



SBGSG-O57 € 159

Black Sunray - Steel
- Gold

EAN: 8720246516593



SWSSS-O56 € 159

White Sunray - Steel
- Silver

EAN: 8720246516401



Studio Edition 03

- Case dimensions: 18 × 18 mm
- Case thickness: 7.5 mm
- Dial type: Sunray etching
- Ring material: Stainless steel



SBGSG-O67 € 139

Watch Ring Black - Steel
- Gold

EAN: 8720246519556



Studio Edition 04

- Case dimensions: 19.5 × 24 mm
- Case thickness: 7.0 mm
- Dial type: Sunray etching [01, 02] Sunray [03]
- Strap size: 19 mm
- Strap material: Stainless steel

01.



SWGSG-O76 € 159

White Sunray - Steel
- Gold

EAN: 8720791522278



02.



SBGSG-O77 € 159

Black Sunray - Steel
- Silver

EAN: 8720791522285



03.



SGSSS-O78 € 159

Gunmetal Sunray - Steel
- Silver

EAN: 8720791522292



Studio Edition 05

- Case dimensions: 15 × 18.5 mm (01) 15 × 18 mm (02)
- Case thickness: 6.5 mm (01) 6.3 mm (02)
- Dial type: Sunray etching (01) Mother of Pearl (02)
- Strap material: Lamb leather (01) Stainless steel (02)

01.



STWBLG-ST03 € 129

White Sunray - Black Leather
- Crystals Gold

EAN: 8720791526191



02.



STWGS-G-ST02 € 159

White MOP - Steel
- Gold

EAN: 8720791525613



Gemme

- Case dimensions: 21.5 × 27.5 mm
- Case thickness: 7.0 mm
- Dial type: Matte (01 - 03) Sunray (04)
- Strap size: 12 mm
- Strap material: Stainless steel

01.



GWGSG-G02 € 139

White Matte - Steel
- Gold

EAN: 8720791521448



02.



GWSSS-G04 € 139

White Matte - Steel
- Silver

EAN: 8720791521462



03.



GWSSS-G03 € 139

White Matte - Steel
- Silver Gold Duo

EAN: 8720791521455



04.



GGSSS-G05 € 139

Gunmetal Sunray - Steel
- Silver

EAN: 8720791522353



Heirloom

- Case dimensions: 23.5 × 30.6 mm
- Case thickness: 6.0 mm
- Dial type: Matte & Sunray (01 - 07) Sunray (08)
- Strap size: 16 mm
- Strap material: Stainless steel (01 - 05)
Genuine leather (06 - 08)

01.



HWGSG-H01 € 129

White Matte & Sunray
- Steel - Gold

EAN: 8720791524494



02.



HWSSS-H02 € 129

White Matte & Sunray
- Steel - Silver

EAN: 8720791524500



03.



HWDSG-H03 € 129

White Matte & Sunray
- Steel - Silver Gold Duo

EAN: 8720791524517



04.



HMGSG-H04 € 129

Mint Green Matte & Sunray
- Steel - Gold

EAN: 8720791524524



05.



HEGSG-H05 € 129

Emerald Matte & Sunray
- Steel - Gold

EAN: 8720791524531



06.



HWBLG-H06 € 99

White - Leather
- Gold

EAN: 8720791525620



07.



HBLS-H08 € 99

Burgundy - Leather
- Silver

EAN: 8720791525644



08.



HCBLG-H07 € 99

Champagne - Leather
- Gold

EAN: 8720791525637



Octagon

- Case dimensions: 23 × 29 mm
- Case thickness: 7,5 mm
- Dial type: Sunray etching
- Strap size: 14 mm
- Strap material: Stainless steel



OCWSG-O40 € 129

White Sunray - Steel
- Gold

EAN: 8720039335813



OCWSS-O41 € 129

White Sunray - Steel
- Silver

EAN: 8720039335820



OCWSRG-O42 € 129

White Sunray - Steel
- Rose Gold

EAN: 8720039335837



OBSSG-O47 € 129

Black Sunray - Steel
- Gold

EAN: 8720039339194



OWSSSG-O48 € 129

White Sunray - Steel
- Silver Gold Duo

EAN: 8720039339200



OCGSG-O65 € 129

Champagne Sunray - Steel
- Gold

EAN: 8720246519518



OGSSS-O80 € 129

Gunmetal Sunray - Steel
- Silver

EAN: 8720791522384



Octagon XS

- Case dimensions: 19.5 × 24 mm
- Case thickness: 7.0 mm
- Dial type: Sunray etching (01 - 08, 14 - 17) Mother of Pearl (09 - 11) Sunray (12, 13)
- Strap size: 12 mm
- Strap material: Stainless steel (01 - 13) Genuine leather (14, 15) Croco leather (16, 17)

01.



OWGSG-O60 € 129

White Sunray - Steel - Gold

EAN: 8720246519341



02.



OBGSG-O61 € 129

Black Sunray - Steel - Gold

EAN: 8720246519358



03.



OWDSG-O62 € 129

White Sunray - Steel - Silver Gold Duo

EAN: 8720246519365



04.



OWGSS-O63 € 129

White Sunray - Steel - Silver

EAN: 8720246519372



05.



OWRSR-O64 € 129

White Sunray - Steel - Silver Rose Gold Duo

EAN: 8720246519389



06.



OWGMG-O73 € 119

White Sunray - Mesh - Gold

EAN: 8720791521516



07.



OWSMS-O74 € 119

White Sunray - Mesh - Silver

EAN: 8720791521523



08.



OWRMR-O59 € 119

White Sunray - Mesh - Rose Gold

EAN: 8720246516418



09.



OGGSG-O71 € 129

Mint Green MOP - Steel - Gold

EAN: 8720791521479



10.



OGGSS-O72 € 129

Mint Green MOP - Steel - Silver

EAN: 8720791521486



11.



OEGSG-O79 € 129

Emerald MOP - Steel - Gold

EAN: 8720791522308



12.



OBGSG-O83 € 129

Burgundy - Steel - Gold

EAN: 8720791526436



13.



OCGSG-O82 € 129

Champagne - Steel - Gold

EAN: 8720791525651



14.



OWBLG-O84 € 99

White Sunray - Black Leather - Gold

EAN: 8720791526443



15.



OWBLG-O85 € 99

White Sunray - Brown Leather - Gold

EAN: 8720791526450



16.



OWGLG-O86 € 99

White Sunray - Green
Leather - Gold

EAN: 8720791526467



17.



OWGLR-O87 € 99

White Sunray - Gray
Leather - Rose Gold

EAN: 8720791526474



Pearl Edit

- Case dimensions: 36 mm
- Case thickness: 7,5 mm
- Dial type: Mother of Pearl

- Strap size: 18 mm
- Strap material: Stainless steel (01 - 08)
Genuine leather (09)

01.



RMGSG-R01 € 119

White MOP - Steel
- Gold

EAN: 8720246513967



02.



RMSSS-R02 € 119

White MOP - Steel
- Silver

EAN: 8720246513974



03.



RMRSR-R03 € 119

White MOP - Steel
- Rose Gold Silver Duo

EAN: 8720246513981



04.



RMGMG-R06 € 99

White MOP - Mesh
- Gold

EAN: 8720246519440



05.



RBGMG-R07 € 99

Black MOP - Mesh
- Gold

EAN: 8720246519457



06.



RMSMS-R08 € 99

White MOP - Mesh
- Silver

EAN: 8720246519464



07.



RMRMR-R09 € 99

White MOP - Mesh
- Rose Gold

EAN: 8720246519471



08.



PEGMG-R10 € 99

Emerald MOP - Mesh
- Gold

EAN: 8720791522346



09.



RMBLG-R04 € 99

White MOP - Butter
Leather - Gold

EAN: 8720246514025



Small Edit

- Case dimensions: 26 mm
- Case thickness: 6.5 mm
- Dial type: Matte (01 - 04) Mother of Pearl (05 - 08, 12, 13) Sunray (09 - 11)

- Strap size: 12 mm
- Strap material: Stainless steel (01 - 11) Half Moon Polish & Matte Steel (12, 13)



26BSG-268 € 119

Black Matte - Steel - Gold

EAN: 8720039333987



26WSG-267 € 119

White Matte - Steel - Gold

EAN: 8720039333970



26SGD-269 € 119

White Matte - Steel - Silver Gold Duo

EAN: 8720039333994



26SRGD-271 € 119

White Matte - Steel - Silver Rose Gold Duo

EAN: 8720039334014



SMGMG-S06 € 99

White MOP - Mesh - Gold

EAN: 8720246519549



26WS-266 € 99

White MOP - Mesh - Silver

EAN: 8719632571964



26WR-265 € 99

White MOP - Mesh - Rose Gold

EAN: 8719632571957



SEEGMG-SE72 € 99

Emerald MOP - Mesh - Gold

EAN: 8720791522742



SCGSG-S05 € 119

Champagne Sunray - Steel - Gold

EAN: 8720246519501



SGSSS-SE03 € 119

Gunmetal Sunray - Steel - Silver

EAN: 8720791522377



SEGS-SE01 € 119

Burgundy - Steel - Gold

EAN: 8720791525699



SEWGS-SE02 € 119

White MOP - Steel - Gold

EAN: 8720791525705



SEWDS-SE03 € 119

White MOP - Steel - Duotone

EAN: 8720791525712



Oval

- Case dimensions: 24 × 29 mm
- Case thickness: 6.7 mm
- Dial type: Mother of Pearl (01 - 09) Sunray (10)
- Strap size: 14 mm
- Strap material: Stainless steel (01 - 07)
Half Moon Polish & Matte Steel (08 - 10)

01.



OWGSG-OV01 € 119

White MOP - Steel
- Gold

EAN: 8720246511529



02.



OWGSS-OV03 € 119

White MOP - Steel
- Silver

EAN: 8720246511581



03.



OWGSR-OV02 € 119

White MOP - Steel
- Rose Gold

EAN: 8720246511550



04.



OBGSG-OV14 € 119

Black MOP - Steel
- Gold

EAN: 8720246519525



05.



OWGMG-OV10 € 109

White MOP - Mesh Steel
- Gold

EAN: 8720246511956



06.



OWSMS-OV11 € 109

White MOP - Mesh Steel
- Silver

EAN: 8720246511963



07.



OWRMR-OV12 € 109

White MOP - Mesh Steel
- Rose Gold

EAN: 8720246511970



08.



OVWGS-GV16 € 119

White MOP - Steel
- Gold

EAN: 8720791525675



09.



OVWDSG-OV17 € 119

White MOP - Steel
- Duotone

EAN: 8720791525682



10.



OVGSG-OV15 € 119

Burgundy - Steel
- Gold

EAN: 8720791525668



Boxy

- Case dimensions: 26 × 28 mm
- Case thickness: 7.0 mm
- Dial type: Matte (01, 08, 10) Sunray etching (02 - 07, 09)
- Strap size: 16 mm
- Strap material: Stainless steel (01 - 08)
Genuine leather (09) Nubuck leather (10)

01.



QBSG-Q017 € 119

Black Matte - Steel
- Gold

EAN: 8720039330641



02.



QWSG-Q09 € 119

White Sunray - Steel
- Gold

EAN: 8719632575122



03.



QWSS-Q08 € 119

White Sunray - Steel
- Silver

EAN: 8719632575115



04.



QVSGD-Q013 € 119

White Sunray - Steel
- Silver Gold Duo

EAN: 8720039330528



05.



QWSG-Q03 € 109

White Sunray - Mesh
- Gold

EAN: 8719632575061



06.



QWSS-Q02 € 109

White Sunray - Mesh
- Silver

EAN: 8719632575054



07.



QWSR-Q01 € 109

White Sunray - Mesh
- Rose Gold

EAN: 8719632575047



08.



QBMG-Q06 € 109

Black Matte - Mesh
- Gold

EAN: 8719632575092



09.



QSCG-Q029 € 109

White Sunray - Cognac
- Gold

EAN: 8720039333956



10.



QBFGG-Q031 € 109

Black Matte - Forest
Green - Gold

EAN: 8720039334168



Boxy XS

- Case dimensions: 22 × 24 mm
- Case thickness: 6,4 mm
- Dial type: Matte [01, 13] Sunray etching [02 - 08, 14] Mother of Pearl [09] Sunray [10 - 12]
- Strap size: 14 mm
- Strap material: Stainless steel [01 - 11] Genuine leather [12, 13] Croco leather [14]

01.



QMBG-Q025 € 119

Black Matte - Steel - Gold

EAN: 8720039333444



02.



QMWSG-Q021 € 119

White Sunray - Steel - Gold

EAN: 8720039333406



03.



QMWSS-Q020 € 119

White Sunray - Steel - Silver

EAN: 8720039333390



04.



QMWSSG-Q023 € 119

White Sunray - Steel - Silver Gold Duo

EAN: 8720039333420



05.



QMWSSR-Q024 € 119

White Sunray - Steel - Silver Rose Gold Duo

EAN: 8720039333437



06.



QMWMG-Q039 € 109

White Sunray - Mesh - Gold

EAN: 8720039335875



07.



QMWMS-Q038 € 109

White Sunray - Mesh - Silver

EAN: 8720039335868



08.



QMWMRG-Q040 € 109

White Sunray - Mesh - Rose Gold

EAN: 8720039335882



09.



BEGSG-Q050 € 119

Emerald MOP - Steel - Gold

EAN: 8720791522315



10.



QCGSG-Q048 € 119

Champagne Sunray - Steel - Gold

EAN: 8720246519488



11.



BGSSS-Q051 € 119

Gunmetal Sunray - Steel - Silver

EAN: 8720791522360



12.



QBBLR-Q56 € 99

Burgundy - Brown Leather - Rose Gold

EAN: 8720791526511



13.



QBBLG-Q53 € 99

Black Matte - Black Leather - Gold

EAN: 8720791526481



14.



QWBLG-Q55 € 99

White Sunray - Croco Leather - Gold

EAN: 8720791526504



Ace

- Case dimensions: 33 mm
- Case thickness: 7.5 mm
- Dial type: Sunray (01 - 04) Matte (05)
- Strap size: 18 mm
- Strap material: Stainless steel

01.



ACSG-A03 € 129

Silver Sunray - Steel
- Gold

EAN: 8720039330429



02.



ACSS-A04 € 129

Silver Sunray - Steel
- Silver

EAN: 8720039333970



03.



ACSGD-A01 € 129

Silver Sunray - Steel
- Silver Gold Duo

EAN: 8720039330405



04.



ACSRD-A06 € 129

Silver Sunray - Steel
- Silver Rose Gold Duo

EAN: 8720039330450



05.



ACBKG-A13 € 129

Black Matte - Steel
- Gold

EAN: 8720039330702



Ace XS

- Case dimensions: 29 mm
- Case thickness: 7.4 mm
- Dial type: Sunray (01 - 04) Matte (05)
- Strap size: 16 mm
- Strap material: Stainless steel

01.



ASGSG-A15 € 129

Silver Sunray - Steel
- Gold

EAN: 8720246511024



02.



ASSSS-A20 € 129

Silver Sunray - Steel
- Silver

EAN: 8720246512007



03.



ASDSSG-A16 € 129

Silver Sunray - Steel
- Silver Gold Duo

EAN: 8720246511031



04.



ASRSR-A21 € 129

Silver Sunday - Steel
- Silver Rose Gold Duo

EAN: 8720246512038



05.



ABGSG-A19 € 129

Black Matte - Steel
- Gold

EAN: 8720246511987



Upper East Side

- Case dimensions: 33 mm
- Case thickness: 7.7 mm
- Dial type: Mother of Pearl

- Strap size: 16 mm
- Strap material: Stainless steel



UEWG-U21 € 119

MOP - Steel
- Gold

EAN: 8719324227742



UEWS-U22 € 119

MOP - Steel
- Silver

EAN: 8719324227759



UBGSG-U35 € 119

Black MOP - Steel
- Gold

EAN: 8720246519426



UBSSS-U36 € 119

Black MOP - Steel
- Silver

EAN: 8720246519433



UWDSSG-U30 € 119

MOP - Steel
- Silver Gold Duo

EAN: 8720246511055



UWGSG-U31 € 119

Crystals MOP - Steel
- Gold

EAN: 8720246512069



UWSSS-U32 € 119

Crystals MOP - Steel
- Silver

EAN: 8720246512090



UGGSG-U37 € 119

Mint Green MOP - Steel
- Gold

EAN: 8720791521493



UGSSS-U38 € 119

Mint Green MOP - Steel
- Silver

EAN: 8720791521509



West Village

- Case dimensions: 33 mm
- Case thickness: 7.0 mm
- Dial type: Brushed (01) Mother of Pearl (02, 04, 05, 07)
Matte (03, 06)
- Strap size: 16 mm
- Strap material: Nubuck leather (01 - 04)
- Genuine leather (05 - 07)



WBUG-W70 € 99

Vintage Brushed - Velvet
Blue - Gold

EAN: 8719324227797



WEGR-W75 € 99

White MOP - Elephant
Grey - Rose Gold

EAN: 8719324227841



WSPR-W73 € 99

White Matte - Soft Pink
- Rose Gold

EAN: 8719324227827



WBFLG-W95 € 99

Black MOP - Forest Green
- Gold

EAN: 8720246519402



WFGG-W85 € 99

White MOP - Fresh Olive
Green - Gold

EAN: 8720039335844



WWCG-W86 € 99

White Matte - Cognac
- Gold

EAN: 8720039335851



WBCLG-W96 € 99

Black MOP - Cognac
- Gold

EAN: 8720246519419



Mercer

- Case dimensions: 38 mm
- Case thickness: 8.0 mm
- Dial type: Matte
- Strap size: 18 mm
- Strap material: Stainless steel



MWG-M41 € 99

White Matte - Mesh
- Gold

EAN: 8719324227193



MWS-M40 € 99

White Matte - Mesh
- Silver

EAN: 8719324227186



MWR-M42 € 99

White Matte - Mesh
- Rose Gold

EAN: 8719324227209



MBR-M45 € 99

Black Matte - Mesh
- Rose Gold

EAN: 8719324227698



MBB-M43 € 99

Black Matte - Mesh
- Black

EAN: 8719324227216



Tribeca

- Case dimensions: 33 mm
- Case thickness: 7.0 mm
- Dial type: Matte
- Strap size: 16 mm
- Strap material: Stainless steel



TWG-T51 € 99

White Matte - Mesh
- Gold

EAN: 8719324227414



TWS-T52 € 99

White Matte - Mesh
- Silver

EAN: 8719324227421



TWR-T50 € 99

White Matte - Mesh
- Rose Gold

EAN: 8719324227407



TBR-T59 € 99

Black Matte - Mesh
- Rose Gold

EAN: 8719324227711



Gift Sets



WEGTR-X184 € 119

The West Village Elephant
Grey + Mesh Rose Gold Strap

EAN: 8719632571858



BFGMG-X237 € 129

The Boxy Black Forest Green
Gold + Mesh Gold Strap

EAN: 8720039334915



BMWMG-X240 € 139

The Boxy XS White Sunray
Gold + Mesh Gold Strap

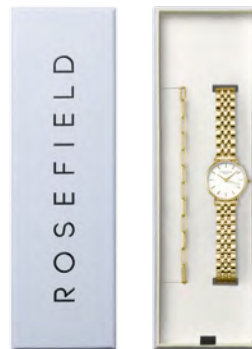
EAN: 8720039334946



BMWLBG-X241 € 139

The Boxy XS White Sunray
Gold + Multi Liquid Charms
Bracelet Gold

EAN: 8720039334953



26WGS-G-X278 € 129

Small Edit White Gold +
Hammered Chainlink Bracelet
Gold

EAN: 8720791522407



OWDSG-X279 € 149

Octagon XS Duotone
+ Multi Crystal Bracelet
Gold

EAN: 8720791522414



Straps

Straps 12 mm

Small Edit, Octagon XS and Gemme

- Strap material: Stainless steel [01 - 17] Nubuck leather [18 - 21] Genuine leather [22, 23] Crocodile leather [24, 25]
- Closure: Jewelry clasp [01 - 17] Buckle clasp [18 - 25]

01.



GGSG-S344 € 49

Steel - Gold

EAN: 8720791521530



02.



GDSGS-S345 € 49

Steel - Silver Gold Duo

EAN: 8720791521547



03.



GSSS-S346 € 49

Steel - Silver

EAN: 8720791521554



04.



OCXSG-S337 € 49

Steel - Gold

EAN: 8720246519600



05.



OCXGD-S338 € 49

Steel - Silver & Gold

EAN: 8720246519617



06.



OCXSS-S339 € 49

Steel - Silver

EAN: 8720246519624



07.



OCXRD-S340 € 49

Steel - Silver Rose Gold Duo

EAN: 8720246519631



08.



SGMG-S324 € 39

Mesh - Gold

EAN: 8720246513882



09.



26SI-S159 € 39

Mesh - Silver

EAN: 8719632572374



10.



26RG-S158 € 39

Mesh - Rose Gold

EAN: 8719632572367



11.



26SG-S202 € 49

Steel - Gold

EAN: 8720039334106



12.



26SRG-S204 € 49

Steel - Rose Gold

EAN: 8720039334120



13.



26SGD-S203 € 49

Steel - Silver Gold Duo

EAN: 8720039334113



14.



26SRGD-S205 € 49

Steel - Silver Rose Gold Duo

EAN: 8720039334137



15.



SSSS-S327 € 49

Steel - Silver

EAN: 8720246513912



16.



SEGG-S354 € 49

Polish & Matte - Steel
- Gold

EAN: 8720791525729

SEGG-S354



17.



SEDSS-S355 € 49

Polish & Matte - Steel
- Duotone

EAN: 8720791525736

SEDSS-S355



18.



SBNG-S326 € 35

Black Leather
- Gold

EAN: 8720246513905

SBNG-S326



19.



SGNS-S325 € 35

Elephant Grey Leather
- Silver

EAN: 8720246513899

SGNS-S325



20.



SMGLR-S322 € 35

Elephant Grey Leather
- Rose Gold

EAN: 8720246513851

SMGLR-S322



21.



SMPLR-S323 € 35

Soft Pink Leather
- Rose Gold

EAN: 8720246513868

SMPLR-S323



22.



OBGL-S361 € 29

Black Leather
- Gold

EAN: 8720791526528

OBGL-S361



23.



OBGL-S362 € 29

Light Brown Leather
- Gold

EAN: 8720791526535

OBGL-S362



24.



OGGL-S363 € 29

Emerald Leather
- Gold

EAN: 8720791526542

OGGL-S363



25.



OGRL-S364 € 29

Grey Leather
- Rose Gold

EAN: 8720791526559

OGRL-S364



Straps 14 mm

Octagon, Boxy XS and Oval

- Strap material: Stainless steel [01 - 17] Nubuck leather [18, 19] Genuine leather [20 - 22] Crocodile leather [23]
- Closure: Jewelry clasp [01 - 17] Buckle clasp [18 - 23]

01.



QMSG-S195 € 49

Steel - Gold

EAN: 8720039333468

QMSG-S195



02.



QMSS-S194 € 49

Steel - Silver

EAN: 8720039333451

QMSS-S194



03.



QMSRG-S196 € 49

Steel - Rose Silver

EAN: 8720039333475

QMSRG-S196



04.



QMSSG-S197 € 49

Steel - Silver Gold Duo

EAN: 8720039333482

QMSSG-S197



05.



QMSSR-S198 € 49

Steel - Silver Rose Gold
Duo

EAN: 8720039333499

QMSSR-S198



06.



OCWSG-S231 € 49

Steel - Gold

EAN: 8720039336049



07.



OCWSS-S232 € 49

Steel - Silver

EAN: 8720039336056



08.



OCWRG-S233 € 49

Steel - Rose Gold

EAN: 8720039336063



09.



OSSGS-S301 € 49

Steel - Silver Gold Duo

EAN: 8720039339255



10.



OGSG-S308 € 49

Steel - Gold

EAN: 8720246511543



11.



OGSS-S310 € 49

Steel - Silver

EAN: 8720246511604



12.



OGSR-S309 € 49

Steel - Rose Gold

EAN: 8720246511574



13.



QMWMG-S235 € 39

Mesh - Gold

EAN: 8720039336094



14.



QMWMS-S234 € 39

Mesh - Silver

EAN: 8720039336070



15.



QMWMR-S236 € 39

Mesh - Rose Gold

EAN: 8720039336100



16.



OVGGS-S356 € 49

Polish & Matte - Steel - Gold

EAN: 8720791525743



17.



OVDSS-S357 € 49

Polish & Matte - Steel - Duotone

EAN: 8720791525750



18.



OGNS-S328 € 35

Elephant Grey Nubuck - Silver

EAN: 8720246513929



19.



WNG-S329 € 35

Forest Green Nubuck - Gold

EAN: 8720246513950



20.



OBSBG-S300 € 29

Black Leather - Gold

EAN: 8720039339248





QBGL-S365 € 29

Black Leather
- Gold

EAN: 8720791526566



QBRL-S368 € 29

Dark Brown Leather
- Rose Gold

EAN: 8720791526597



QBGL-S367 € 29

Medium Brown Leather
- Gold

EAN: 8720791526580



Straps 16 mm

Boxy, Ace XS, West Village, Upper East Side, Tribeca and Heirloom

- Strap material: Stainless steel (01 - 17) Nubuck leather (18 - 22) Genuine leather (23 - 30) Caviar patterned genuine leather (31)
- Closure: Jewelry clasp (01 - 17) Buckle clasp (18 - 31)



QVSGD-S191 € 49

Steel - Silver Gold Duo

EAN: 8720039330610



QVSRD-S192 € 49

Steel - Silver Rose gold Duo

EAN: 8720039330627



AGTSG-S305 € 49

Steel - Gold

EAN: 8720246511000



ASTSS-S318 € 49

Steel - Silver

EAN: 8720246512021



ASRTSR-S319 € 49

Steel - Silver Rose Gold Duo

EAN: 8720246512052



UDSSG-S307 € 49

Steel - Silver Gold Duo

EAN: 8720246511048



UGSG-S320 € 49

Steel tapered - Gold

EAN: 8720246512083



USSS-S321 € 49

Steel tapered - Silver

EAN: 8720246512113



UEG-S135 € 49

Steel - Gold

EAN: 8719324227865



UES-S136 € 49

Steel - Silver

EAN: 8719324227872



11.



UER-S134 € 49

Steel - Rose Gold

EAN: 8719324227858



12.



TMGS-S126 € 39

Mesh - Gold

EAN: 8719324227599



13.



TMSS-S127 € 39

Mesh - Silver

EAN: 8719324227605



14.



TMRS-S125 € 39

Mesh - Rose Gold

EAN: 8719324227582



15.



HCGS-S347 € 49

Steel - Gold

EAN: 8720791524555



16.



HSSS-S348 € 49

Steel - Silver

EAN: 8720791524562



17.



HDSS-S349 € 49

Steel - Silver Gold Duo

EAN: 8720791524579



18.



WBUGS-S137 € 35

Velvet Blue Leather
- Gold

EAN: 8719324227889



19.



WFGG-S211 € 35

Forest Green Leather
- Gold

EAN: 8720039334151



20.



WEGRS-S142 € 35

Elephant Grey Leather
- Rose Gold

EAN: 8719324227933



21.



WSPRS-S140 € 35

Soft Pink Leather
- Rose Gold

EAN: 8719324227919



22.



WBLGS-S138 € 35

Black Leather
- Gold

EAN: 8719324227896



23.



HBGL-S358 € 29

Black Leather
- Gold

EAN: 8720791525767



24.



HBSL-S359 € 29

Burgundy Leather
- Silver

EAN: 8720791525774



25.



WCGRG-S208 € 35

Cool Grey Leather
- Rose Gold

EAN: 8720039334076





WCG-S209 € 35

Cognac Leather
- Gold

EAN: 8720039334083



WAG-S210 € 35

Aubergine Leather
- Gold

EAN: 8720039334090



WOPRG-S206 € 35

Old Pink Leather
- Rose Gold

EAN: 8720039334052



WOGRG-S207 € 35

Fresh Olive Green Leather
- Rose Gold

EAN: 8720039334069



WOGG-S240 € 35

Fresh Olive Green Leather
- Gold

EAN: 8720039337756



UGCRG-S304 € 29

Grey Leather - Rose Gold

EAN: 8720039339316



Straps 18 mm

Pearl Edit, Ace and Mercer

- Strap material: Stainless steel (01 - 11) Genuine leather (12)
- Closure: Jewelry clasp (01 - 11) Buckle clasp (12)



ACSG-S188 € 49

Steel - Gold

EAN: 8720039330580



ACSS-S189 € 49

Steel - Silver

EAN: 8720039330597



ACRS-S193 € 49

Steel - Rose Gold

EAN: 8720039333369



ACSGD-S186 € 49

Steel - Silver Gold Duo

EAN: 8720039330566



ACSRD-S187 € 49

Steel - Silver Rose Gold Duo

EAN: 8720039330573



06.



PGTG-S332 € 49

Steel - Gold

EAN: 8720246514520



07.



PSTS-S333 € 49

Steel - Silver

EAN: 8720246514537



08.



PDTR-S334 € 49

Steel - Silver Rose Gold Duo

EAN: 8720246514544



09.



PGTMG-S341 € 39

Steel - Gold

EAN: 8720246519648



10.



PSTMS-S342 € 39

Steel - Silver

EAN: 8720246519655



11.



PRTMR-S343 € 39

Steel - Rose Gold

EAN: 8720246519662



12.



PBTG-S330 € 29

Butter Leather Tapered - Gold

EAN: 8720246514506



Visual Merchandising

Complete Display



Layout

In consideration for the available space in your window showcase, we ask that for each visual merchandising set you respect the layout of all individual pieces as outlined below.



35 Watches

DWF053

Approx. dimensions:

35 × 50 × 21 cm

EAN: 8720791524883



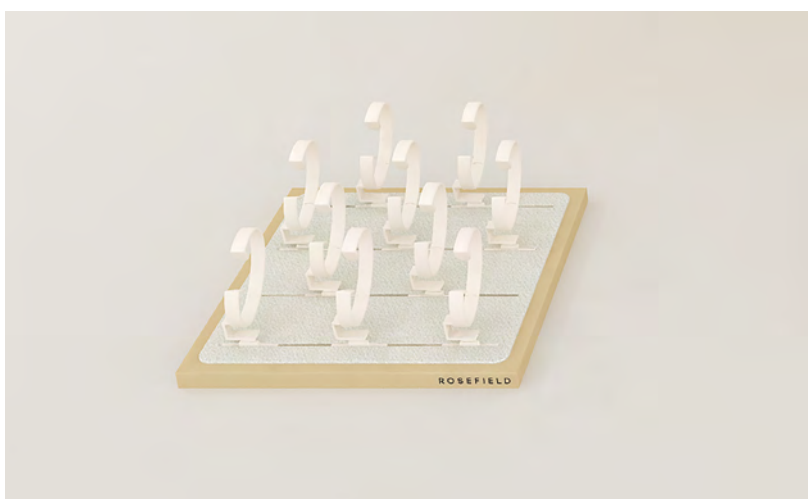
Large back board

DWB054

Approx. dimensions:

50 × 53 × 1,5 cm

EAN: 8720791524890



Extension tray with 10 C-Rings

DWE055

Approx. dimensions:

24 × 24 × 11 cm

EAN: 8720791524906



Layout



Choker Display
DRD058

Approx. dimensions:
13 × 13 × 10 cm
EAN: 8720791526610



Plain large back board
DWB059

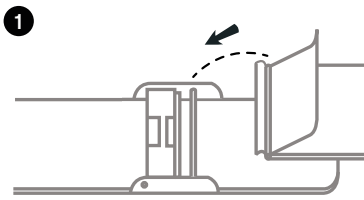
Approx. dimensions:
40 × 50 × 1.5 cm
EAN: 8720791526818



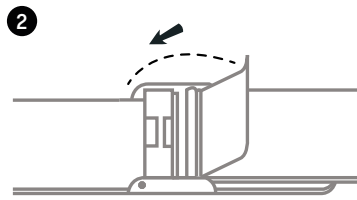
Instructions

Instructions

CLOSING THE CLASP OF YOUR STRAP

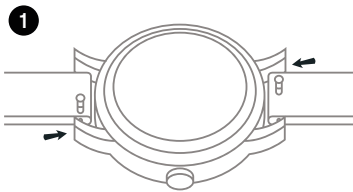


1. Hook the top part of the clasp onto the thin metal bar.

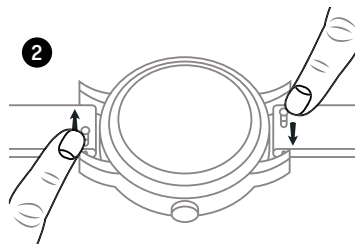


2. Snap the closure on.

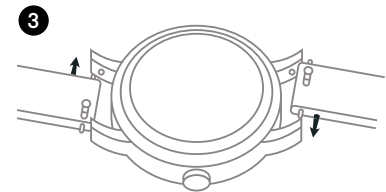
CHANGING YOUR STRAP



1. Securely hold the watch and locate the pin mechanism on the bottom side of the strap.

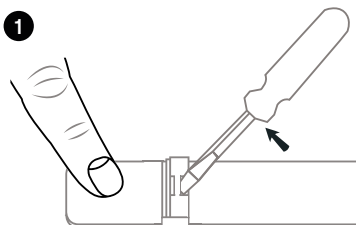


2. Slide the pin to the opposite side to release the strap from the lugs.

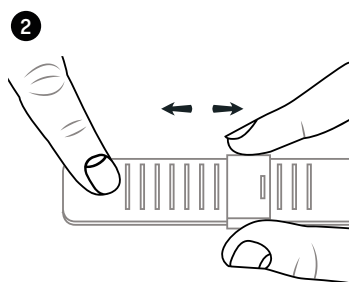


3. To attach a new strap, start with the pin located on the opposite side of the slide mechanism. Place the pin in the lug, while slightly tilting the strap forward. Slide the pin mechanism and place the other pin between the lugs.

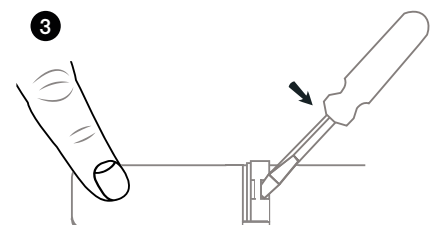
ADJUSTING THE SIZE OF YOUR STRAP



1. Insert a metal tool into the slot and lift up the plate clamp.



2. On the back side, slide the locking clasp to the desired position to adjust the length of the strap.

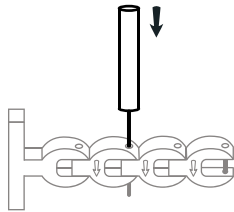


3. Press the plate clamp back down (firmly) to lock the clasp to the mesh strap.

Instructions

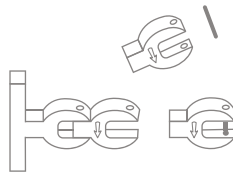
ADJUSTING THE SIZE OF YOUR LINK STRAP

1



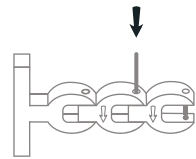
1. Insert the strap tool (supplied with every steel strap) into the hole on the side of the strap and push the pin out in the direction of the arrow. Using a small household hammer, tap lightly until the pin comes out on the other side. Grasp the pin and pull out.

2



2. Remove or add required strap links. If removing more than one strap link, remove an equal number of links from both sides (if possible) to keep the strap even and symmetrical.

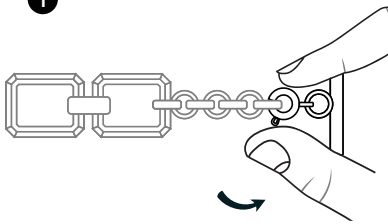
3



3. After removing or adding the necessary number of strap links, place the pins back in the opposite direction of the arrows shown on the links, the pin's grooved top faced down. To finish, tap the pins back through using the hammer.

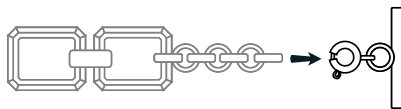
ADJUSTING THE SIZE OF YOUR CHAIN BRACELET

1



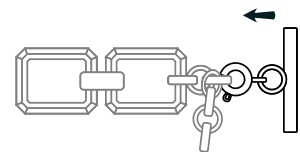
1. Open the spring lock, and release the T-bar from the chain tail.

2



2. Separate the T-bar from the chain tail.

3



3. Attach the T-bar with spring lock to the chain tail in the correct size to fit your wrist.

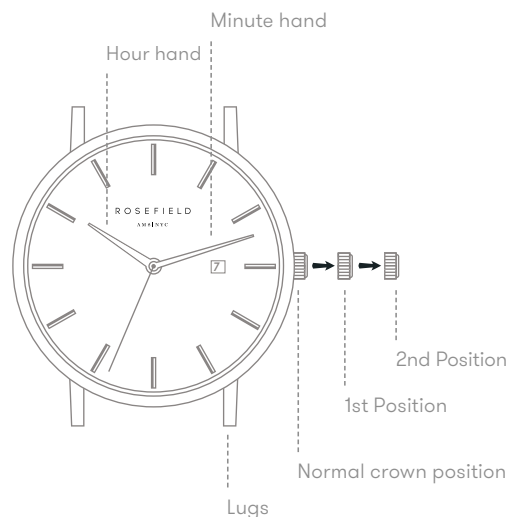
SETTING THE TIME AND THE DATE

1. Remove the plastic stopper to start the watch.

2. Pull the crown out to the second position.

3. Turn the crown to set the time.

4. Push the crown back to the normal position.



1. Pull the crown out to the first position.

2. Turn the crown counter-clockwise to set the date.

3. Push the crown back to the normal position.

* If the date is set between the hours of 9:00 PM and 1:00 AM, the date may not change the following day.

Warranty & After Sales

Warranty & After Sales

WARRANTY

Your Rosefield product is guaranteed free from manufacturing defects for a period of 24 months from the date of purchase. This guarantees the buyer that the product meets the standards of usability, reliability, and durability.

The warranty does not apply to:

- Damages as a result of inattention or improper usage such as scratching, bouncing or falling.
- Failure or damage caused by unjustifiable repair or modification performed by a third party, without prior written permission by ROSEFIELD.
- Failure or damage caused by fire or water (the watches are 3 ATM water-resistant).
- Visible wear traces on the watch (e.g. minor scratches on the case and/or crystal, alteration of the color on the watchband and scratches or softening of the leather strap).
- Battery replacement, also not during the warranty term.

CUSTOMER SERVICE

Business to Business Support

Email: b2b@rosefieldwatches.com

